

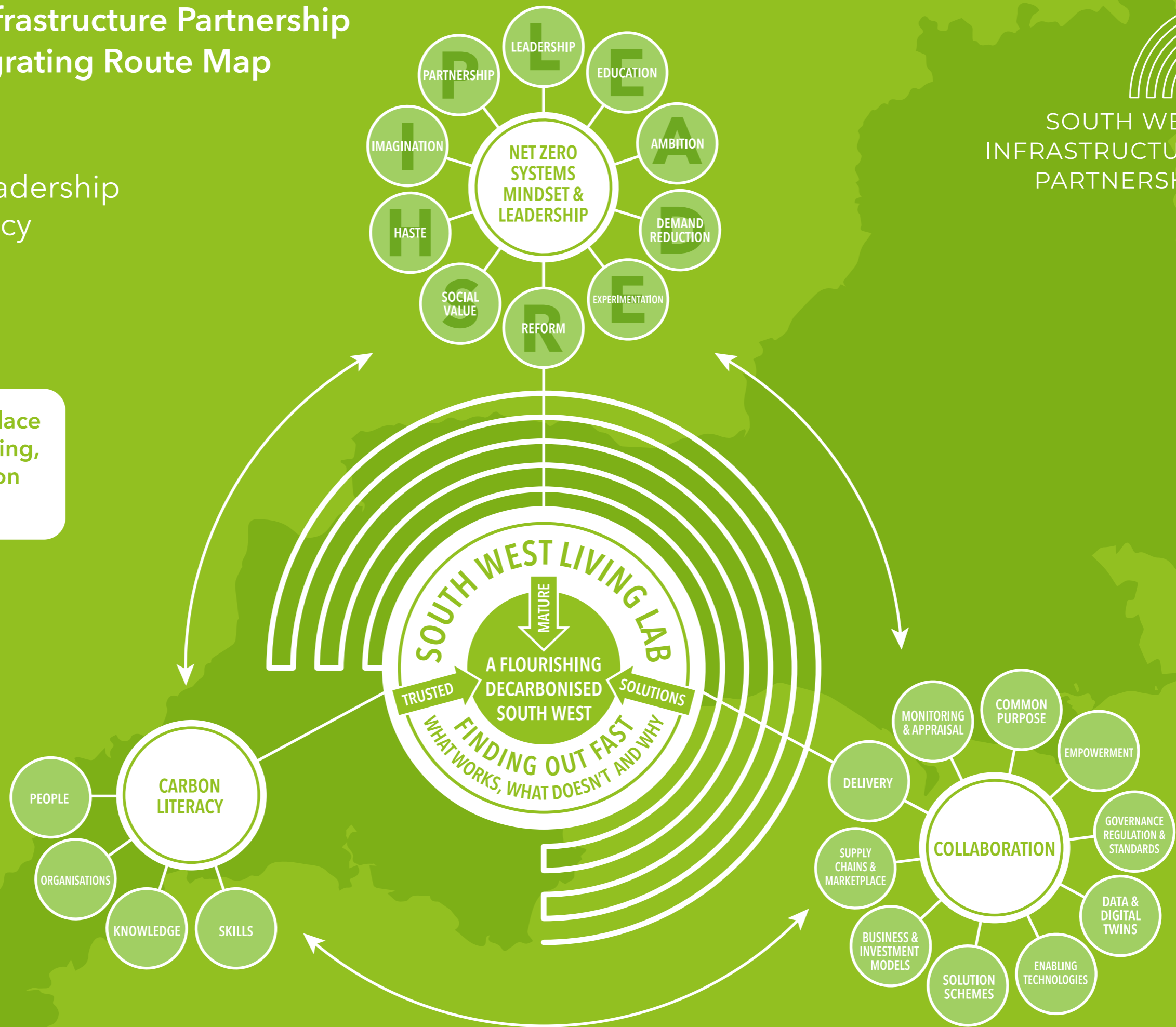
South West Infrastructure Partnership Net Zero Integrating Route Map

3 Key Pillars:

- Mindset & Leadership
- Carbon Literacy
- Collaboration



South West as a place of joined-up learning, thinking, innovation and practice.



LEADERSHIP

Unambiguous strategies and early adoption of supporting policies and standards.

AMBITION

We need to commit by investing early and executing quickly adopting a similar approach to the COVID vaccine programme.

EXPERIMENTATION

Given the urgency, we need to find the quickest ways of finding out what works and what doesn't by using the living laboratory concept.

SOCIAL VALUE

We need to consider the needs of all parts of society in our journey to net zero.

IMAGINATION

We need to think more imaginatively about potential solutions and how they can be achieved in practice.

LEADERSHIP

EDUCATION

For students, practitioners and the public so we are all informed on the future choices we must make.

DEMAND REDUCTION

We need to reduce our consumption and travel demands, and make better use of what we waste.

REFORM

Organisations and people need to adapt to new norms such as changing travel and work patterns and increased use of electricity to power cars and heat homes.

HASTE

We need to act with urgency so we need to think how increased experimentation could accelerate our journey.

PARTNERSHIP

We need to work collaboratively and systematically to achieve the goal of net zero.